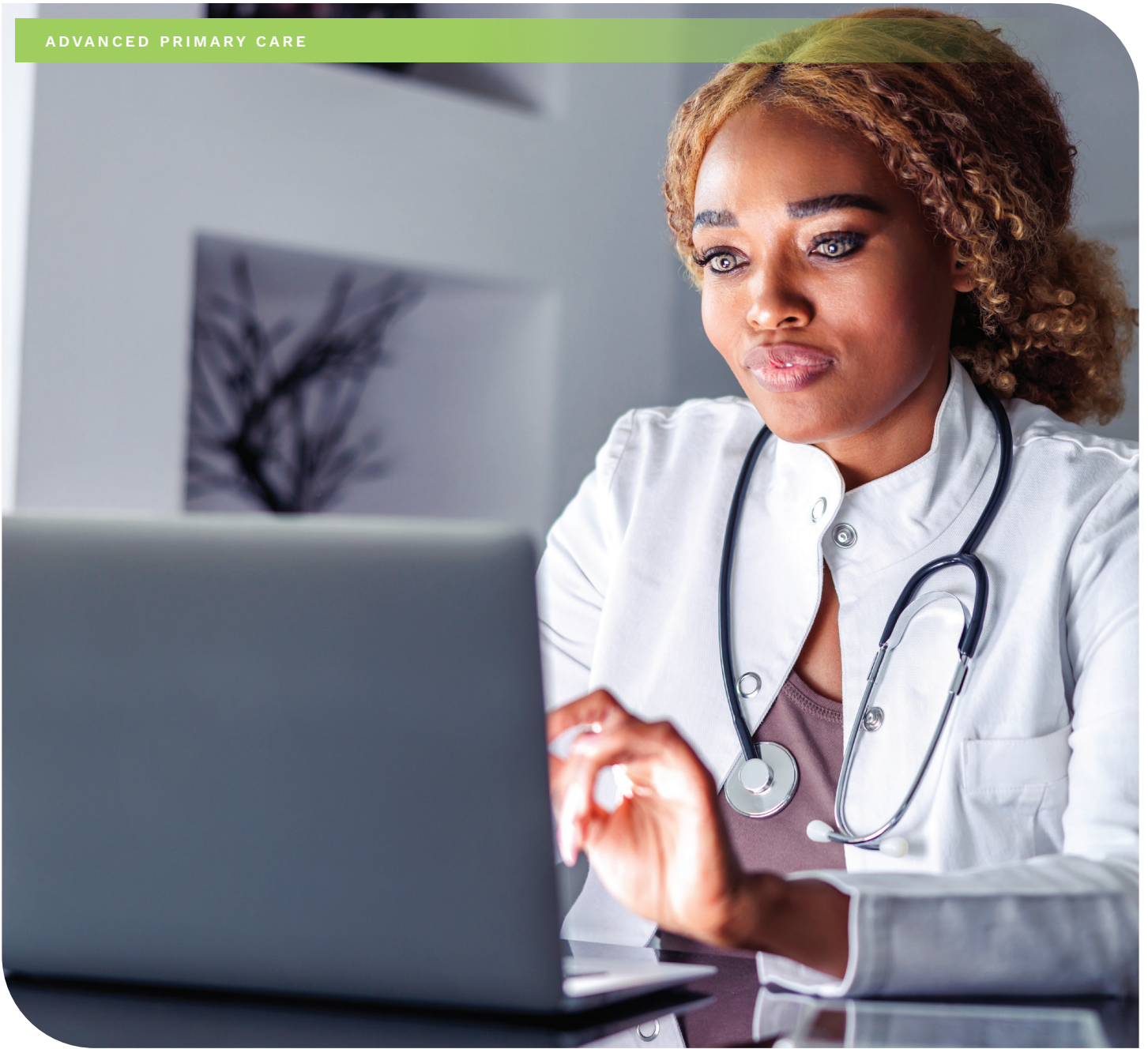


ADVANCED PRIMARY CARE



## Enter a New Era of Primary Care Excellence

---

Making it easy for employees to access high-quality primary care



Purchaser Business  
Group on Health

## The PBGH Difference

PBGH is developing a turnkey system of excellence to supplement employers' existing health plan offerings starting in 2024.

## Unleashing the Power of Advanced Primary Care

Research shows that primary care lowers costs by as much as 33%, reduces the odds of dying of premature death by 19% and increases productivity.

With \$13 saved for every \$1 invested in primary care, your company can't afford NOT to have a sophisticated primary care strategy.

## Summary of offerings



### Increased Convenience and Access to High-Quality Primary Care

Get easy access to the highest quality providers that meet advanced primary care standards developed by and for employers. Employees receive exceptional care without the need for an annual enrollment (and set up) requirement.



### Simplified Contracting

Say goodbye to lengthy, complicated contracts and hello to a simplified shared master contract that eliminates your administrative burden.



### Transparent Data on Quality

Receive transparent and actionable reports on providers' performance to ensure quality and access standards are being met.



### Exclusive Employee Benefits

Employees gain exclusive access to privileges that waive co-pays and offer personalized benefits, such as transportation and childcare. This streamlined benefit system doesn't require a separate enrollment process, allowing you to offer additional perks without the need for a dedicated enrollment option.



### Navigation Services Steer Employees to Top Specialists

We make it easy for primary care providers to refer only to the top local in-network specialists. A dedicated team of Care Connectors works with your employees to make scheduling appointments easy, eliminating valuable time spent making multiple calls to medical offices. Employees can be confident they are seeing a top-rated physician.



## Increased Convenience and Access to High-Quality Primary Care

PBGH prioritizes increasing employee convenience and access to high-quality care. Through our rigorous selection process, we identify and vet the top primary care providers in each region where we establish an advanced primary care network. By partnering with health care providers who meet employer-set performance benchmarks and have capacity to take on new patients, we ensure that you have a primary care strategy that lowers total costs while mitigating fiduciary risks through high-value care. Our supplemental service is specifically designed to enhance your existing health plan without the need for an annual enrollment (and set up) requirement.

### Key Features of your increased access to high-quality care:

- **Rigorous Provider Identification:** We employ a rigorous process to identify and select the highest quality primary care providers and continuously measure outcomes to drive improvement based on standards set by you and your employees. Our thorough evaluation ensures that only providers who meet your stringent standards are included in the advanced primary care network.
- **Cost Reduction:** A strong primary care strategy is a key driver in lowering health care costs. Research has shown every \$1 invested in primary care saves \$13. By connecting you with high-quality primary care providers, we help optimize your health care spending by focusing on preventive care, early detection and managing chronic conditions.
- **Improved Employee Engagement:** By prioritizing high-quality primary care, you safeguard your company's interests. Healthy and engaged employees lead to improved productivity, reduced absenteeism and enhanced overall workforce well-being. A robust primary care strategy supports your organization's long-term success.
- **No Required Annual Enrollment:** Our convenient solution will improve the health care experience for your employees while cutting costs and guaranteeing peace of mind -- all without the need for an annual enrollment (and set up) requirement.

---

*Unlock the power of primary care. Experience optimal health care outcomes by participating in a network of top-tier providers.*



## Simplified Contracting

At PBGH, we understand the challenges of navigating employers' contracting process for health care services. That's why we offer a simplified approach that reduces your administrative burden. With our shared master services agreement (MSA) and expert guidance, let us do the work for you while you benefit from the best practices and access to the highest-quality providers in your desired regions. With a shared structure, you can join with other employers in a market to put into place an advanced primary care solution where it previously would not have been possible to do so alone.

### Key Features of our simplified contracting:

- **Shared MSA:** We provide a shared MSA that serves as a comprehensive contract template, streamlining the process for contracting with advanced primary care providers. This shared agreement reduces administrative burden and allows for efficient negotiations.
- **Rider Options:** We offer flexible rider options within the shared MSA, allowing you to customize the agreement based on your specific needs and requirements. This ensures that your unique preferences and standards are incorporated into the contracting process.
- **Reduced Administrative Burden:** Our streamlined approach significantly reduces the administrative burden associated with contracting. We handle the complexities and paperwork on your behalf, saving you valuable time and resources.
- **Expanded Reach:** Our contracting process allows you to participate in regions where you may not have enough covered lives to invest in a primary care solution on your own. This strategic approach enables you to extend your coverage and provide comprehensive health care options to your employees, regardless of geographical limitations.

---

*By leveraging our expertise, you can focus on your core business while we facilitate the contracting with the highest-quality providers in your desired regions. Start optimizing your health care services today and drive improvement based on your defined standards.*



## Transparent Data on Quality

Many employers lack access to comprehensive health plan data, leaving them uncertain about whether their needs and expectations are being met. PBGH believes in holding the health system accountable and providing transparent data to empower employers, ensuring that you and your employees receive the highest standard of care.

With enhanced, vetted data and meaningful quality metrics, you can confidently make informed decisions about your employees' health care.

### Key Features of our transparent data reporting:

- **Comprehensive Data Analysis:** Our dedicated team delves deep into health plan data to provide you with comprehensive insights. We meticulously analyze key quality metrics, allowing you to make informed decisions regarding the care your employees receive.
- **Verified and Vetted Data:** Our data is thoroughly vetted and verified to ensure accuracy and reliability. We understand the importance of basing your decisions on trustworthy information, and our commitment to delivering high-quality data reflects this.
- **Relevant Quality Metrics:** We focus on providing you with quality metrics that truly matter. Our tailored approach ensures that the data you receive aligns with your specific needs and priorities, enabling you to evaluate the performance of health plans effectively.

*Unlock enhanced data insights. Access quality metrics that truly matter. Empower your decision-making by gaining access to our reliable and transparent metrics.*



## Exclusive Employee Rewards Program

Our rewards program is designed to offer employees an exceptional benefits experience. With the innovative feature of remote rewards addition, it provides unmatched flexibility to cater to diverse employee needs. Envision introducing a benefit design without the annual enrollment and setup hassle. Instead of traditional gift cards that may result in wasted unused funds, our system ensures that any unused rewards are returned to the sponsor, ensuring maximum value.

### Key Features of our VIP access card:

- **Earned Rewards:** Through our user-friendly platform, employees have the opportunity to earn and accumulate rewards. They'll enjoy the flexibility of deciding when and how to use them.
- **Flexible Qualifying Usage:** Rewards can be added remotely as incentive bonuses at any time. Just like using a debit card, employees can redeem their rewards for a variety of qualifying services such as fresh vegetables, Uber/Lyft rides, doctors' visits, select prescription costs, and more. This adaptability allows employers to shape benefits directly to address individual employee needs without complicated, option-based infrastructure.
- **Optimizing Value:** Traditional gift cards can leave unused funds wasted. With our system, any unredeemed rewards are returned to the sponsor, ensuring every bit of value is fully maximized, fostering a mutually beneficial rewards program.





## Navigation Services Steer Employees to Top Specialists

Say goodbye to the challenging task of searching for the right specialist and struggling to secure a timely appointment. Our innovative texting platform offers unparalleled convenience by connecting your employees with a dedicated Care Connector who will assist them in finding the ideal specialist within your network. With just a few simple messages, we streamline the Advanced Primary Care referral process, ensuring the referral process to primary care practices.

Consider us your employees' personal concierge for medical care. Our experienced team will diligently locate and schedule appointments with highly rated doctors within your medical plan network.

### Key features of our referral support:

- **Simple Texting Platform:** Our user-friendly texting platform makes it effortless for members to communicate with a Care Connector and access the support they need.
- **Precision Referrals:** Our Care Connectors are well-versed in navigating the health care landscape. They will provide members with knowledgeable guidance to ensure they find the best in-network provider for their specific needs.
- **Appointment Scheduling:** Once we have identified the ideal specialist for your employees, our Care Connectors will assist in scheduling an appointment at a time that is convenient for them.

---

*Experience the convenience and peace of mind that comes with our referral support. Let us handle the logistics while you focus on your employees' health and well-being.*

When primary care is done well, it has been shown to save lives, improve health outcomes and reduce health care costs. By developing a turnkey national primary care center of excellence network with quality-based specialty referrals — a network built to reflect purchaser priorities — we believe we can make significant strides in member engagement, health improvement, productivity and total cost management.

For more information about the PBGH System of Excellence and to explore other options for advanced primary care, visit our [website](#) or [email](#) Raymond Tsai, M.D. M.S., Vice President, Advanced Primary Care.



Purchaser Business Group on Health